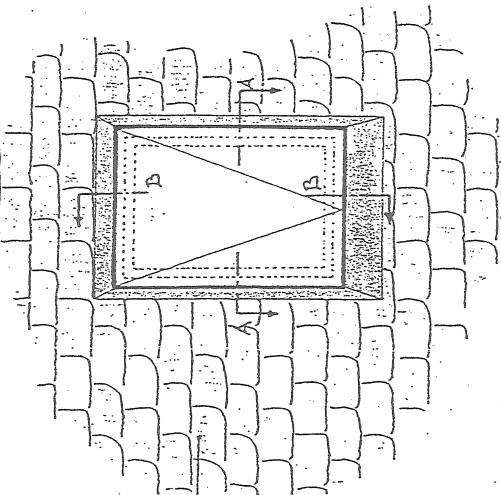
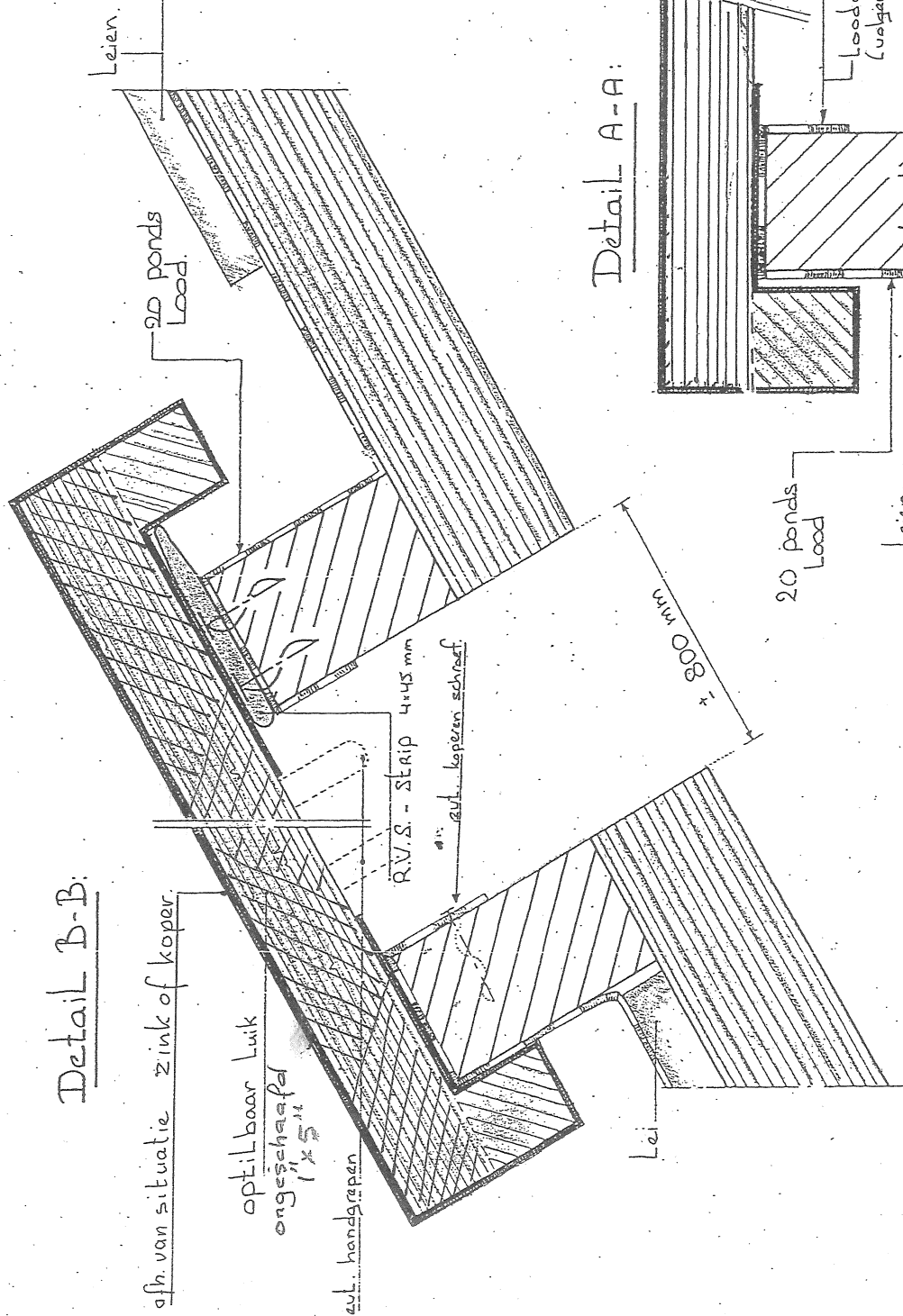


Situatie schets:



optilbaar dakluik

Detail B-B:



afn. van situatie zink of koper.

optilbaar dakluik
ongeschaafd 1x5"

zvl. handgrepen

R.V.S.-strip 4x45 mm
zvl. koperen schroef

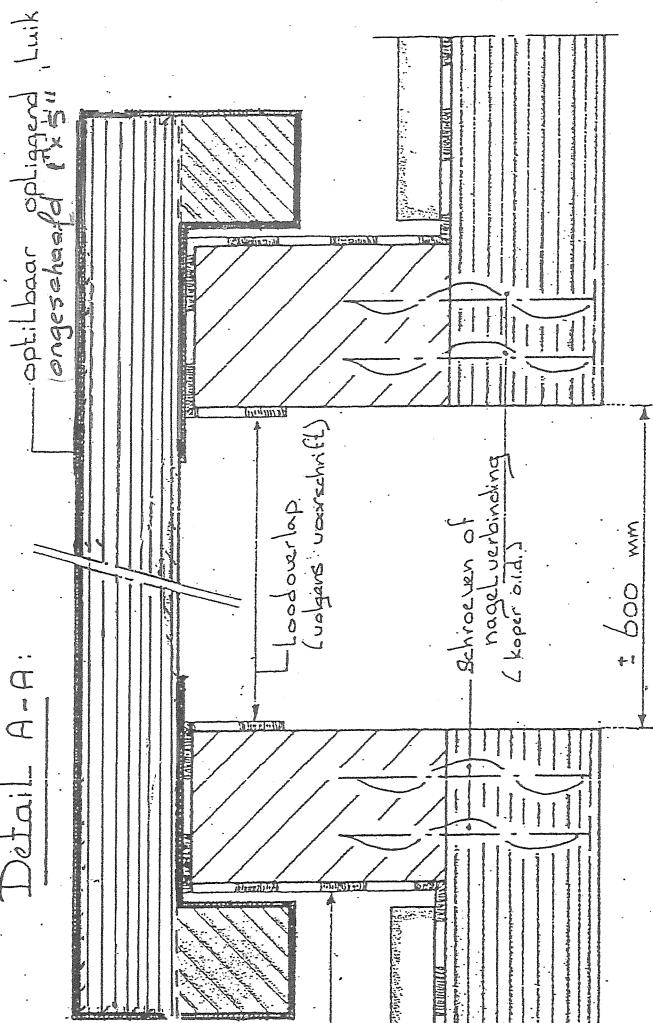
Leien

± 800 mm

20 ponds lood

Leien

Detail A-A:



optilbaar dakluik
ongeschaafd 1x5"

loodoverlap
(volgens voorschrift)

Schroeven of
nagelverbinding
(koper o.i.d.)

± 600 mm